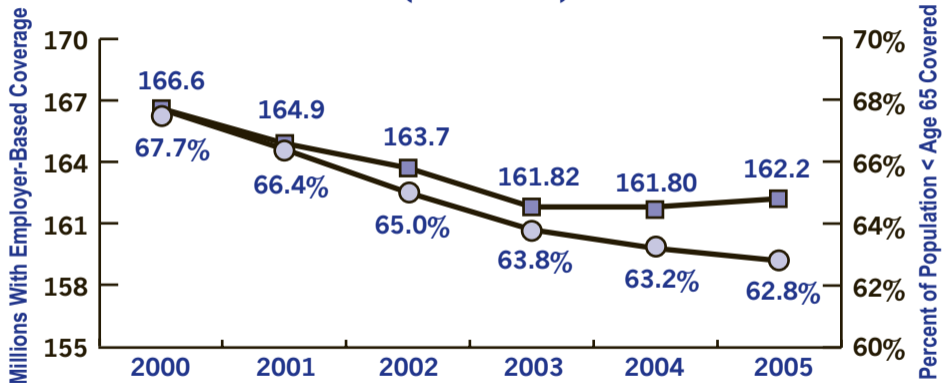


TRENDS IN EMPLOYER-BASED COVERAGE, 2000 - 2005 (AGE < 65)



Source: U.S. Census Bureau (2006). "Table HI-6. Health Insurance Coverage Status and Type of Coverage by State -- People Under 65: 1987 to 2005." (www.census.gov/hhes/www/hlthins/historic/hihist6.html)